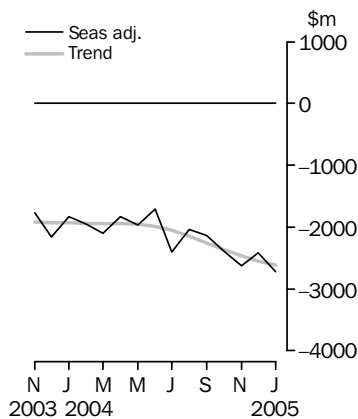


# INTERNATIONAL TRADE IN GOODS AND SERVICES

AUSTRALIA

EMBARGO: 11.30AM (CANBERRA TIME) MON 28 FEB 2005

## Balance on goods and services



## KEY FIGURES

	November 2004 \$m	December 2004 \$m	January 2005 \$m	Dec 04 to Jan 05 % change
<b>TREND</b>				
Balance on goods & services	-2 466	-2 556	-2 612	..
Credits (exports of goods & services)	12 989	12 985	13 010	—
Debits (imports of goods & services)	15 455	15 541	15 622	1
<b>SEASONALLY ADJUSTED</b>				
Balance on goods & services	-2 624	-2 414	-2 721	..
Credits (exports of goods & services)	12 905	13 070	13 023	—
Debits (imports of goods & services)	15 529	15 484	15 744	2

.. not applicable

— nil or rounded to zero (including null cells)

## KEY POINTS

### TREND ESTIMATES

- The provisional trend estimate of the balance on goods and services was a deficit of \$2,612m in January 2005, an increase of \$56m on the deficit in December.
- Goods and services credits rose \$25m to \$13,010m. Non-rural and other goods rose \$66m (1%), while rural goods fell \$51m (3%). Services credits rose \$10m.
- Goods and services debits rose \$81m (1%) to \$15,622m. Consumption goods rose \$69m (2%), intermediate and other goods rose \$20m, while capital goods fell \$37m (1%). Services debits rose \$29m (1%).

### SEASONALLY ADJUSTED ESTIMATES

- In seasonally adjusted terms, the balance on goods and services was a deficit of \$2,721m in January, an increase of \$307m on the deficit in December.
- Goods and services credits fell \$47m to \$13,023m. Rural goods fell \$104m (5%), while non-rural and other goods rose \$6m. Services credits rose \$51m (2%).
- Goods and services debits rose \$260m (2%) to \$15,744m. Consumption goods rose \$393m (10%), while capital goods fell \$120m (4%) and intermediate and other goods fell \$66m (1%). Services debits rose \$53m (2%).

### ORIGINAL ESTIMATES

- In original terms, the January balance on goods and services was a deficit of \$2,349m, an increase of \$264m on the deficit in December. Goods and services credits fell \$1,354m (10%) and goods and services debits fell \$1,090m (7%).
- In the seven months to January, exports of non-rural and other goods were up \$7.6b (15%) and rural goods were up \$2.1b (16%) on the corresponding period in 2003–04.

## INQUIRIES

- For further information about these and related statistics, contact the National Information and Referral Service on 1300 135 070 or Artur Andrysiak on Canberra (02) 6252 6792.

# NOTES

## FORTHCOMING ISSUES

<i>ISSUE</i>	<i>RELEASE DATE</i>
February 2005	5 April 2005
March 2005	5 May 2005
April 2005	2 June 2005
May 2005	4 July 2005
June 2005	2 August 2005
July 2005	30 August 2005

## REVISIONS

Revisions were made to rectify reporting errors in 2003 - 04. In original terms, these revisions have increased the deficit on goods and services for 2003-04 by \$44m.

## ABBREVIATIONS

\$b	billion (thousand million) dollars
\$m	million dollars
ABS	Australian Bureau of Statistics
APEC	Asia Pacific Economic Co-operation
ASEAN	Association of South-East Asian Nations
n.e.s.	not elsewhere specified
n.i.e.	not included elsewhere
OECD	Organisation for Economic Co-operation and Development
SAR	Special Administrative Region
SITC	Standard International Trade Classification

Peter Harper  
Acting Australian Statistician

# CONTENTS

page

Tables on AusStats	4
--------------------	---

## ANALYSIS

Analysis and comments	5
-----------------------	---

## TABLES

### INTERNATIONAL TRADE IN GOODS AND SERVICES – BALANCE OF PAYMENTS BASIS

<b>1</b> Goods and services, summary, seasonally adjusted and trend estimates	10
<b>2</b> Goods and services, summary, original	11
<b>3</b> Goods credits, original	12
<b>4</b> Goods debits, original	13
<b>5</b> Services, summary, original	14
<b>6</b> Services, summary, seasonally adjusted and trend estimates	15
<b>7</b> Services, original, quarterly	16

### INTERNATIONAL MERCHANDISE TRADE – RECORDED TRADE BASIS

<b>8</b> International merchandise exports, by commodity	17
<b>9</b> International merchandise imports, by commodity	20
<b>10</b> International merchandise trade, by country and country groups	23
<b>11</b> International merchandise trade, by state	24

### OTHER TABLES

<b>12</b> Period average exchange rates per Australian Dollar	25
---	----

## OTHER INFORMATION

Explanatory Notes	26
Appendix – Related articles	29

## TABLES ON AUSSTATS

---

### TABLES AVAILABLE ON AUSSTATS

Data available on the ABS web site <<http://www.abs.gov.au>> include:

- longer time series of all tables contained in this publication
- additional tables listed below:

13 Merchandise exports by Broad Economic Category (BEC)

14 Merchandise exports by industry of origin (ANZSIC)

15 Merchandise imports by Broad Economic Category (BEC)

16 Merchandise imports by Balance of Payments Broad Economic Category (BoPBEC)

17 Merchandise imports by industry of origin (ANZSIC)

18 Merchandise exports, state by country and country groups

19 Merchandise imports, state by country and country groups

20 Monthly forward seasonal adjustment factors.

## ANALYSIS AND COMMENTS

### BALANCE ON GOODS AND SERVICES

The trend estimate of the balance on goods and services in January 2005 was a deficit of \$2,612m, an increase of \$56m on the deficit in December.

In seasonally adjusted terms, the balance on goods and services in January 2005 was a deficit of \$2,721m, an increase of \$307m on the deficit in December.

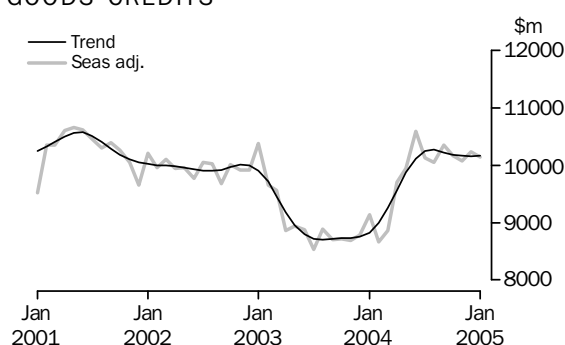
### EXPORTS OF GOODS AND SERVICES

The trend estimate of goods and services credits rose \$25m between December and January to \$13,010m.

In seasonally adjusted terms, goods and services credits fell \$47m between December and January to \$13,023m. Rural goods fell \$104m (5%), while non-rural and other goods rose \$6m and services credits rose \$51m (2%).

#### *Exports of goods*

#### GOODS CREDITS



#### RURAL GOODS

The trend estimate of rural goods exports fell \$51m (3%) to \$1,964m.

In seasonally adjusted terms, exports of rural goods fell \$104m (5%) to \$1,929m.

In original terms, exports of rural goods fell \$516m (24%) to \$1,646m.

Movements in the original series contributing to the fall in seasonally adjusted terms were:

- other rural, down \$233m (25%), compared with an average December to January fall of 11% over the previous three years
- meat and meat preparations, down \$254m (43%), compared with an average December to January fall of 37% over the previous three years
- wool and sheepskins, down \$128m (48%), compared with an average December to January fall of 38% over the previous three years.

Partly offsetting these effects were cereal grains and cereal preparations, up \$99m (26%), compared with an average December to January rise of 18% over the previous three years.

Contributing to the offset by about 1 percentage point was an adjustment made as part of the regular seasonal adjustment process to take into account different trading day patterns in December and January.

## ANALYSIS AND COMMENTS *continued*

### Exports of goods *continued*

#### NON-RURAL AND OTHER GOODS

The trend estimate of non-rural and other goods exports rose \$66m (1%) to \$8,205m.

In seasonally adjusted terms, exports of non-rural and other goods rose \$6m to \$8,209m.

In original terms, exports of non-rural and other goods fell \$1,317m (15%) to \$7,213m.

Movements in the original series contributing to the rise in seasonally adjusted terms were:

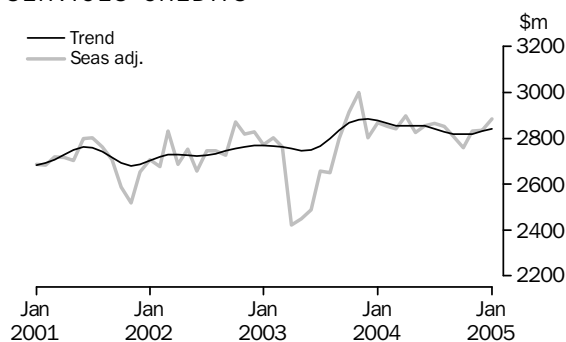
- metal ores and minerals, down \$175m (11%), compared with an average December to January fall of 20% over the previous three years
- other mineral fuels, up \$32m (4%), in contrast to an average December to January fall of 5% over the previous three years
- metals (excluding gold), up \$10m (1%), in contrast to an average December to January fall of 7% over the previous three years
- other non-rural, down \$76m (9%), compared with an average December to January fall of 13% over the previous three years.

Largely offsetting these effects were:

- other goods, down \$35m (5%), in contrast to an average December to January rise of 32% over the previous three years
- other manufactures, down \$447m (35%), compared with an average December to January fall of 22% over the previous three years
- machinery, down \$346m (46%), compared with an average December to January fall of 37% over the previous three years.

### Exports of services

#### SERVICES CREDITS



In trend terms, services credits rose \$10m to \$2,841m.

Seasonally adjusted, services credits rose \$51m (2%) to \$2,885m.

Movements in the seasonally adjusted components contributing to this rise were:

- travel services, up \$41m (3%)
- transportation services, up \$9m (2%).

Seasonally adjusted, tourism related services credits rose \$52m (3%) to \$1,847m.

## ANALYSIS AND COMMENTS *continued*

### IMPORTS OF GOODS AND SERVICES

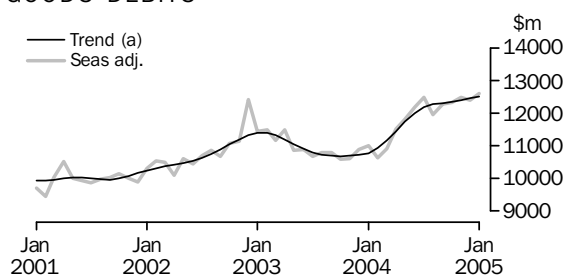
The trend estimate of goods and services debits rose \$81m (1%) between December and January to \$15,622m.

In seasonally adjusted terms, goods and services debits rose \$260m (2%) to \$15,744m.

Consumption goods rose \$393m (10%) and services debits rose \$53m (2%), while capital goods fell \$120m (4%) and intermediate and other goods fell \$66m (1%).

#### *Imports of goods*

#### GOODS DEBITS



(a) Trend estimates exclude abnormal imports of aircraft in December 2002.

#### CONSUMPTION GOODS

The trend estimate of imports of consumption goods rose \$69m (2%) to \$4,034m.

In seasonally adjusted terms, imports of consumption goods rose \$393m (10%) to \$4,260m.

In original terms, imports of consumption goods fell \$83m (2%) to \$3,721m.

Movements in the original series contributing to the rise in seasonally adjusted terms were:

- non-industrial transport equipment, up \$47m (4%), in contrast to an average December to January fall of 17% over the previous three years
- textiles, clothing and footwear, up \$210m (58%), compared with an average December to January rise of 34% over the previous three years.

Contributing to the rise by about 6 percentage points was an adjustment made as part of the regular seasonal adjustment process to take into account different trading day patterns in December and January.

Partly offsetting these effects were:

- consumption goods n.e.s., down \$135m (11%), in contrast to an average December to January rise of 1% over the previous three years
- household electrical items, down \$107m (30%), compared with an average December to January fall of 18% over the previous three years
- toys, books and leisure goods, down \$47m (17%), compared with an average December to January fall of 5% over the previous three years.

#### CAPITAL GOODS

The trend estimate of imports of capital goods fell \$37m (1%) to \$2,836m.

In seasonally adjusted terms, imports of capital goods fell \$120m (4%) to \$2,760m.

In original terms, imports of capital goods fell \$593m (20%) to \$2,416m.

## ANALYSIS AND COMMENTS *continued*

*Imports of goods continued*

CAPITAL GOODS *continued*

Movements in the original series contributing to the fall in seasonally adjusted terms were:

- civil aircraft, down \$131m (99%), in contrast to large December to January rises over the previous three years
- machinery and industrial equipment, down \$222m (18%), compared with an average December to January fall of 3% over the previous three years
- capital goods n.e.s., down \$71m (18%), compared with an average December to January fall of 13% over the previous three years.

Partly offsetting these effects were:

- telecommunications equipment, down \$99m (25%), compared with an average December to January fall of 41% over the previous three years
- industrial transport equipment n.e.s., up \$34m (9%), in contrast to an average December to January fall of 3% over the previous three years.

Contributing to the offset by about 8 percentage points was an adjustment made as part of the regular seasonal adjustment process to take into account different trading day patterns in December and January.

### INTERMEDIATE AND OTHER GOODS

The trend estimate of imports of intermediate and other goods rose \$20m to \$5,646m.

In seasonally adjusted terms, intermediate and other goods imports fell \$66m (1%) to \$5,589m.

In original terms, imports of intermediate and other goods fell \$567m (10%) to \$5,162m.

Movements in the original series contributing to the fall in seasonally adjusted terms were:

- fuels and lubricants, down \$367m (27%), compared with an average December to January fall of 2% over the previous three years (crude petroleum volumes fell 26.6% and prices fell 8.5% between December and January)
- processed industrial supplies n.e.s., down \$26m (2%), in contrast to an average December to January rise of 9% over the previous three years
- other parts for capital goods, down \$98m (12%), compared with an average December to January fall of 1% over the previous three years
- other goods, down \$79m (18%), in contrast to an average December to January rise of 1% over the previous three years.

Partly offsetting these effects were:

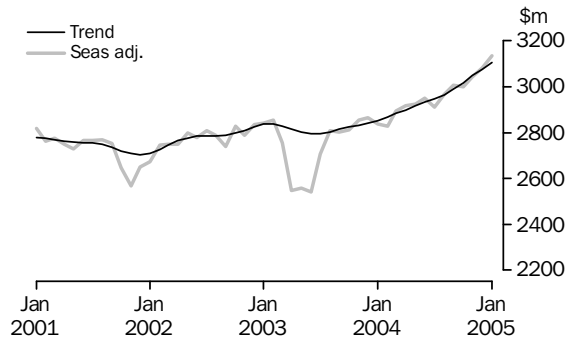
- parts for transport equipment, up \$9m (2%), in contrast to an average December to January fall of 2% over the previous three years
- other merchandise goods, steady, compared with an average December to January fall of 10% over the previous three years.

Contributing to the offset by about 6 percentage points was an adjustment made as part of the regular seasonal adjustment process to take into account different trading day patterns in December and January.



Imports of services

SERVICES DEBITS



In trend terms, services debits rose \$29m (1%) to \$3,106m.

Seasonally adjusted, services debits rose \$53m (2%) to \$3,135m.

Movements in the seasonally adjusted components contributing to this rise were:

- freight transportation services, up \$25m (4%)
- travel services, up \$22m (2%).

Seasonally adjusted, tourism related services debits rose \$30m (2%) to \$1,596m.

## GOODS AND SERVICES (a), Summary: Seasonally Adjusted and Trend Estimates

Months	BALANCE	CREDITS					DEBITS					
	On goods and services	Total goods and services	Total goods	Rural goods(b)	Non-rural and other goods(b)	Total services	Total goods and services	Total goods	Consumption goods	Capital goods	Intermediate and other goods	Total services
	\$m	\$m	\$m	\$m	\$m	\$m	\$m	\$m	\$m	\$m	\$m	\$m
SEASONALLY ADJUSTED												
<b>2003</b>												
November	-1 763	11 696	8 696	1 834	6 862	3 000	-13 459	-10 606	-3 459	-2 617	-4 530	-2 853
December	-2 162	11 588	8 785	1 954	6 831	2 803	-13 750	-10 885	-3 530	-2 670	-4 685	-2 865
<b>2004</b>												
January	-1 824	12 011	9 143	2 143	7 000	2 868	-13 835	-10 998	-3 630	-2 692	-4 676	-2 837
February	-1 950	11 513	8 661	2 126	6 535	2 852	-13 463	-10 633	-3 364	-2 496	-4 773	-2 830
March	-2 094	11 709	8 869	1 987	6 882	2 840	-13 803	-10 910	-3 556	-2 592	-4 762	-2 893
April	-1 832	12 607	9 711	2 251	7 460	2 896	-14 439	-11 523	-3 794	-2 675	-5 054	-2 916
May	-1 968	12 772	9 946	2 429	7 517	2 826	-14 740	-11 817	-3 837	-2 809	-5 171	-2 923
June	-1 708	13 446	10 593	2 665	7 928	2 853	-15 154	-12 205	-3 939	-3 022	-5 244	-2 949
July	-2 412	13 001	10 136	2 436	7 700	2 865	-15 413	-12 502	-3 852	-3 193	-5 457	-2 911
August	-2 035	12 899	10 049	2 334	7 715	2 850	-14 934	-11 966	-3 756	-2 886	-5 324	-2 968
September	-2 140	13 159	10 352	2 287	8 065	2 807	-15 299	-12 293	-3 873	-2 851	-5 569	-3 006
October	-2 395	12 933	10 175	2 144	8 031	2 758	-15 328	-12 329	-3 810	-3 069	-5 450	-2 999
November	-2 624	12 905	10 074	2 087	7 987	2 831	-15 529	-12 487	-3 867	-2 936	-5 684	-3 042
December	-2 414	13 070	10 236	2 033	8 203	2 834	-15 484	-12 402	-3 867	-2 880	-5 655	-3 082
<b>2005</b>												
January	-2 721	13 023	10 138	1 929	8 209	2 885	-15 744	-12 609	-4 260	-2 760	-5 589	-3 135
TREND ESTIMATES												
<b>2003</b>												
November	-1 918	11 617	8 735	1 899	6 836	2 882	-13 535	-10 703	-3 490	-2 586	-4 627	-2 832
December	-1 923	11 637	8 753	1 955	6 798	2 884	-13 560	-10 719	-3 498	-2 586	-4 635	-2 841
<b>2004</b>												
January	-1 931	11 702	8 825	2 017	6 808	2 877	-13 633	-10 781	-3 516	-2 588	-4 677	-2 852
February	-1 938	11 858	8 995	2 097	6 898	2 863	-13 796	-10 929	-3 561	-2 607	-4 761	-2 867
March	-1 938	12 111	9 257	2 195	7 062	2 854	-14 049	-11 166	-3 632	-2 660	-4 874	-2 883
April	-1 937	12 422	9 568	2 301	7 267	2 854	-14 359	-11 460	-3 716	-2 739	-5 005	-2 899
May	-1 946	12 730	9 874	2 391	7 483	2 856	-14 676	-11 759	-3 790	-2 833	-5 136	-2 917
June	-1 984	12 967	10 114	2 443	7 671	2 853	-14 951	-12 019	-3 841	-2 924	-5 254	-2 932
July	-2 055	13 091	10 251	2 444	7 807	2 840	-15 146	-12 198	-3 854	-2 988	-5 356	-2 948
August	-2 148	13 100	10 273	2 386	7 887	2 827	-15 248	-12 283	-3 842	-3 006	-5 435	-2 965
September	-2 258	13 044	10 226	2 285	7 941	2 818	-15 302	-12 313	-3 834	-2 985	-5 494	-2 989
October	-2 365	13 004	10 187	2 180	8 007	2 817	-15 369	-12 351	-3 857	-2 949	-5 545	-3 018
November	-2 466	12 989	10 169	2 092	8 077	2 820	-15 455	-12 406	-3 905	-2 911	-5 590	-3 049
December	-2 556	12 985	10 154	2 015	8 139	2 831	-15 541	-12 464	-3 965	-2 873	-5 626	-3 077
<b>2005</b>												
January	-2 612	13 010	10 169	1 964	8 205	2 841	-15 622	-12 516	-4 034	-2 836	-5 646	-3 106

(a) For sign conventions, see paragraph 9 of the Explanatory Notes.

(b) For all time periods, estimates for sugar, sugar preparations and honey are included in Non-rural and other goods.

## GOODS AND SERVICES(a), Summary: Original

	BALANCE	CREDITS					DEBITS					
	<i>On goods and services</i>	<i>Total goods and services</i>	<i>Total goods</i>	<i>Rural goods(b)</i>	<i>Non-rural and other goods(b)</i>	<i>Total services</i>	<i>Total goods and services</i>	<i>Total goods</i>	<i>Con-sumption goods</i>	<i>Capital goods</i>	<i>Inter-mediate and other goods</i>	<i>Total services</i>
	\$m	\$m	\$m	\$m	\$m	\$m	\$m	\$m	\$m	\$m	\$m	\$m
FINANCIAL YEAR												
<b>2001-02</b>	<b>-1 373</b>	153 200	120 950	30 085	90 865	32 250	-154 573	-121 942	-37 422	-27 208	-57 312	-32 631
<b>2002-03</b>	<b>-18 876</b>	148 293	115 800	25 484	90 316	32 493	-167 169	-134 278	-41 228	-31 554	-61 496	-32 891
<b>2003-04</b>	<b>-23 756</b>	143 444	109 489	24 560	84 929	33 955	-167 200	-132 974	-42 916	-32 066	-57 992	-34 226
MONTHS												
<b>2003</b>												
November	<b>-1 568</b>	11 588	8 713	1 845	6 868	2 875	-13 156	-10 369	-3 540	-2 549	-4 280	-2 787
December	<b>-1 934</b>	12 074	9 284	2 097	7 187	2 790	-14 008	-11 147	-3 517	-2 840	-4 790	-2 861
<b>2004</b>												
January	<b>-1 774</b>	11 242	7 968	1 868	6 100	3 274	-13 016	-10 102	-3 223	-2 404	-4 475	-2 914
February	<b>-185</b>	11 944	8 315	2 090	6 225	3 629	-12 129	-9 589	-3 092	-2 041	-4 456	-2 540
March	<b>-2 278</b>	12 014	9 238	2 139	7 099	2 776	-14 292	-11 529	-3 684	-2 681	-5 164	-2 763
April	<b>-1 736</b>	12 110	9 396	2 202	7 194	2 714	-13 846	-10 986	-3 486	-2 484	-5 016	-2 860
May	<b>-1 389</b>	12 586	10 151	2 519	7 632	2 435	-13 975	-11 166	-3 459	-2 704	-5 003	-2 809
June	<b>-2 480</b>	13 166	10 582	2 607	7 975	2 584	-15 646	-12 676	-3 791	-3 609	-5 276	-2 970
July	<b>-1 973</b>	13 543	10 131	2 379	7 752	3 412	-15 516	-12 462	-3 991	-3 237	-5 234	-3 054
August	<b>-2 287</b>	13 065	10 397	2 295	8 102	2 668	-15 352	-12 348	-3 940	-2 945	-5 463	-3 004
September	<b>-3 398</b>	12 987	10 536	2 291	8 245	2 451	-16 385	-13 123	-4 368	-3 019	-5 736	-3 262
October	<b>-2 656</b>	13 443	10 753	2 250	8 503	2 690	-16 099	-12 908	-4 191	-3 079	-5 638	-3 191
November	<b>-3 459</b>	12 841	10 135	2 123	8 012	2 706	-16 300	-13 301	-4 276	-3 133	-5 892	-2 999
December	<b>-2 085</b>	13 519	10 692	2 162	8 530	2 827	-15 604	-12 542	-3 804	-3 009	-5 729	-3 062
<b>2005</b>												
January	<b>-2 349</b>	12 165	8 859	1 646	7 213	3 306	-14 514	-11 299	-3 721	-2 416	-5 162	-3 215
FINANCIAL YEAR TO DATE												
<b>7 months ended January</b>												
2004	<b>-15 688</b>	81 624	61 807	13 003	48 804	19 817	-97 312	-77 028	-25 404	-18 547	-33 077	-20 284
2005	<b>-18 207</b>	91 563	71 503	15 146	56 357	20 060	-109 770	-87 983	-28 291	-20 838	-38 854	-21 787

(a) For sign conventions, see paragraph 9 of the Explanatory Notes.

(b) For all time periods, estimates for sugar, sugar preparations and honey are included in Non-rural and other goods.

## GOODS CREDITS: Original

	2001-02	2002-03	2003-04	Nov 2004	Dec 2004	Jan 2005	7 MONTHS ENDED JANUARY		Change
							2004	2005	
							\$m	\$m	
<b>Total goods credits</b>	<b>120 950</b>	<b>115 800</b>	<b>109 489</b>	<b>10 135</b>	<b>10 692</b>	<b>8 859</b>	<b>61 807</b>	<b>71 503</b>	<b>15.7</b>
<b>Rural goods</b>									
Meat and meat preparations	6 246	5 655	5 758	592	594	340	3 074	3 853	25.3
Cereal grains and cereal preparations	6 481	4 487	5 094	439	384	483	2 272	3 361	47.9
Wool and sheepskins	3 687	3 545	2 778	244	267	139	1 493	1 612	8.0
Other rural	13 671	11 797	10 930	848	917	684	6 164	6 320	2.5
<i>Total rural goods(a)</i>	<i>30 085</i>	<i>25 484</i>	<i>24 560</i>	<i>2 123</i>	<i>2 162</i>	<i>1 646</i>	<i>13 003</i>	<i>15 146</i>	<i>16.5</i>
<b>Non-rural goods</b>									
Metal ores and minerals	14 774	14 523	14 888	1 446	1 572	1 397	8 323	10 362	24.5
Coal, coke and briquettes	13 430	11 987	11 001	1 207	1 326	1 325	5 965	8 929	49.7
Other mineral fuels	10 940	11 049	8 766	1 003	837	869	5 420	6 433	18.7
Metals (excl. gold)	9 650	8 711	7 759	719	707	717	4 198	4 973	18.5
Machinery	7 999	7 362	6 839	634	753	407	3 963	4 313	8.8
Transport equipment	5 686	6 273	5 155	364	480	201	3 039	2 695	-11.3
Other manufactures	13 758	13 485	13 276	1 167	1 263	816	7 630	7 999	4.8
Other non-rural(a)	7 009	8 234	9 286	829	843	767	5 325	6 053	13.7
<i>Total non-rural goods(a)</i>	<i>83 246</i>	<i>81 624</i>	<i>76 970</i>	<i>7 369</i>	<i>7 781</i>	<i>6 499</i>	<i>43 863</i>	<i>51 757</i>	<i>18.0</i>
<b>Other goods</b>									
<i>Total other goods(b)</i>	<i>7 619</i>	<i>8 692</i>	<i>7 959</i>	<i>643</i>	<i>749</i>	<i>714</i>	<i>4 941</i>	<i>4 600</i>	<i>-6.9</i>

(a) For all time periods, estimates for sugar, sugar preparations and honey are included in Other non-rural.

(b) Includes non-monetary gold.

## GOODS DEBITS(a): Original

							7 MONTHS ENDED JANUARY		Change
	2001-02	2002-03	2003-04	Nov 2004	Dec 2004	Jan 2005	2004	2005	
	\$m	\$m	\$m	\$m	\$m	\$m	\$m	\$m	
<b>Total goods debits</b>	<b>-121 942</b>	<b>-134 278</b>	<b>-132 974</b>	<b>-13 301</b>	<b>-12 542</b>	<b>-11 299</b>	<b>-77 028</b>	<b>-87 983</b>	<b>14.2</b>
Consumption goods									
Food and beverages, mainly for consumption	-4 687	-5 067	-5 167	-535	-530	-479	-3 098	-3 487	12.6
Household electrical items	-3 166	-3 657	-3 793	-451	-352	-245	-2 280	-2 586	13.4
Non-industrial transport equipment	-9 930	-11 302	-12 326	-1 056	-1 105	-1 152	-7 097	-7 426	4.6
Textiles, clothing and footwear	-4 849	-5 237	-5 078	-486	-364	-574	-3 029	-3 528	16.5
Toys, books and leisure goods	-3 494	-3 740	-3 593	-402	-278	-231	-2 267	-2 374	4.7
Consumption goods n.e.s.	-11 296	-12 225	-12 959	-1 346	-1 175	-1 040	-7 633	-8 890	16.5
<i>Total consumption goods</i>	<i>-37 422</i>	<i>-41 228</i>	<i>-42 916</i>	<i>-4 276</i>	<i>-3 804</i>	<i>-3 721</i>	<i>-25 404</i>	<i>-28 291</i>	<i>11.4</i>
Capital goods									
Machinery and industrial equipment	-9 502	-11 007	-11 064	-1 236	-1 250	-1 028	-6 524	-7 993	22.5
ADP equipment	-5 055	-4 908	-5 138	-468	-474	-370	-2 754	-3 162	14.8
Telecommunications equipment	-3 643	-3 619	-4 105	-432	-392	-293	-2 212	-2 776	25.5
Civil aircraft	-1 513	-3 887	-3 061	-110	-132	-1	-2 140	-1 265	-40.9
Industrial transport equipment n.e.s.	-3 613	-3 881	-4 092	-445	-374	-408	-2 259	-2 884	27.7
Capital goods n.e.s.	-3 882	-4 252	-4 606	-442	-387	-316	-2 658	-2 758	3.8
<i>Total capital goods</i>	<i>-27 208</i>	<i>-31 554</i>	<i>-32 066</i>	<i>-3 133</i>	<i>-3 009</i>	<i>-2 416</i>	<i>-18 547</i>	<i>-20 838</i>	<i>12.4</i>
Intermediate and other merchandise goods									
Food and beverages, mainly for industry	-577	-736	-625	-56	-51	-59	-375	-384	2.4
Primary industrial supplies n.e.s.	-1 117	-1 220	-1 079	-84	-98	-83	-646	-612	-5.3
Fuels and lubricants	-8 823	-10 393	-9 917	-1 302	-1 345	-978	-5 136	-8 151	58.7
Parts for transport equipment	-6 827	-7 258	-6 548	-619	-546	-555	-3 897	-4 046	3.8
Parts for ADP equipment	-2 159	-2 011	-1 812	-149	-151	-125	-1 046	-1 046	—
Other parts for capital goods	-8 216	-8 605	-8 553	-886	-797	-699	-4 943	-5 617	13.6
Organic and inorganic chemicals	-3 447	-3 089	-3 048	-260	-312	-292	-1 718	-1 993	16.0
Paper and paperboard	-2 225	-2 326	-2 242	-212	-185	-187	-1 343	-1 401	4.3
Textile yarn and fabrics	-1 830	-1 839	-1 576	-132	-105	-114	-949	-902	-5.0
Iron and steel	-1 765	-1 960	-2 026	-223	-235	-267	-1 157	-1 546	33.6
Plastics	-2 182	-2 478	-2 177	-228	-209	-213	-1 267	-1 444	14.0
Processed industrial supplies n.e.s.	-11 441	-12 238	-12 029	-1 223	-1 178	-1 152	-6 835	-8 103	18.6
Other merchandise goods	-1 563	-1 710	-1 234	-88	-70	-70	-684	-604	-11.7
<i>Total intermediate and other merchandise goods</i>	<i>-52 172</i>	<i>-55 863</i>	<i>-52 866</i>	<i>-5 462</i>	<i>-5 282</i>	<i>-4 794</i>	<i>-29 996</i>	<i>-35 849</i>	<i>19.5</i>
Other goods									
<i>Total other goods(b)</i>	<i>-5 140</i>	<i>-5 633</i>	<i>-5 126</i>	<i>-430</i>	<i>-447</i>	<i>-368</i>	<i>-3 081</i>	<i>-3 005</i>	<i>-2.5</i>

— nil or rounded to zero (including null cells)

(b) Includes non-monetary gold.

(a) For sign conventions, see paragraph 9 of the Explanatory Notes.

## SERVICES (a)(b), Summary: Original

							7 MONTHS ENDED JANUARY		Change %
	2001-02	2002-03	2003-04	Nov 2004	Dec 2004	Jan 2005	2004	2005	
	\$m	\$m	\$m	\$m	\$m	\$m	\$m	\$m	
<b>Credits</b>									
Freight	1 001	920	830	74	73	71	483	502	3.9
Other transportation	6 664	6 538	6 783	586	600	628	3 948	4 174	5.7
Travel	15 645	15 452	17 108	1 281	1 395	1 891	9 987	10 189	2.0
Other services	8 940	9 583	9 234	765	759	716	5 399	5 195	-3.8
<b>Total services credits</b>	<b>32 250</b>	<b>32 493</b>	<b>33 955</b>	<b>2 706</b>	<b>2 827</b>	<b>3 306</b>	<b>19 817</b>	<b>20 060</b>	<b>1.2</b>
<b>Debits</b>									
Freight	-5 626	-5 808	-6 056	-702	-690	-633	-3 451	-4 512	30.7
Other transportation	-5 150	-5 152	-5 578	-460	-507	-490	-3 225	-3 465	7.4
Travel	-10 918	-11 012	-12 136	-1 007	-1 014	-1 318	-7 304	-8 016	9.7
Other services	-10 937	-10 919	-10 456	-830	-851	-774	-6 304	-5 794	-8.1
<b>Total services debits</b>	<b>-32 631</b>	<b>-32 891</b>	<b>-34 226</b>	<b>-2 999</b>	<b>-3 062</b>	<b>-3 215</b>	<b>-20 284</b>	<b>-21 787</b>	<b>7.4</b>
<b>Memorandum items:</b>									
Tourism related service credits(c)	19 800	19 503	21 081	1 616	1 743	2 261	12 381	12 586	1.7
Tourism related service debits(c)	-15 577	-15 691	-17 258	-1 427	-1 482	-1 767	-10 274	-11 192	8.9

(a) For sign conventions, see paragraph 9 of the Explanatory Notes.

(b) For more detailed trade in services by commodity, see table 7.

(c) For a more detailed explanation of tourism related services, see paragraphs 15 and 16 of the Explanatory Notes.

SERVICES (a), Summary: **Seasonally Adjusted and Trend Estimates**

	Apr 2004	May 2004	Jun 2004	Jul 2004	Aug 2004	Sep 2004	Oct 2004	Nov 2004	Dec 2004	Jan 2005
	\$m	\$m	\$m	\$m	\$m	\$m	\$m	\$m	\$m	\$m

## SEASONALLY ADJUSTED

**Credits**

Freight	74	73	73	71	69	71	72	71	71	73
Other transportation	615	587	600	602	603	581	576	578	572	581
Travel	1 429	1 396	1 426	1 445	1 436	1 412	1 371	1 447	1 453	1 494
Other services	778	770	754	747	742	743	739	735	738	737
<b>Total services credits</b>	<b>2 896</b>	<b>2 826</b>	<b>2 853</b>	<b>2 865</b>	<b>2 850</b>	<b>2 807</b>	<b>2 758</b>	<b>2 831</b>	<b>2 834</b>	<b>2 885</b>

**Debits**

Freight	-521	-552	-580	-590	-566	-625	-631	-662	-684	-709
Other transportation	-495	-483	-483	-445	-469	-490	-495	-496	-500	-504
Travel	-1 055	-1 045	-1 048	-1 056	-1 048	-1 078	-1 080	-1 100	-1 101	-1 123
Other services	-845	-843	-838	-820	-885	-813	-793	-784	-797	-799
<b>Total services debits</b>	<b>-2 916</b>	<b>-2 923</b>	<b>-2 949</b>	<b>-2 911</b>	<b>-2 968</b>	<b>-3 006</b>	<b>-2 999</b>	<b>-3 042</b>	<b>-3 082</b>	<b>-3 135</b>

**Memorandum items:**

Tourism related service credits(b)	1 753	1 735	1 777	1 796	1 782	1 747	1 630	1 767	1 795	1 847
Tourism related service debits(b)	-1 525	-1 477	-1 489	-1 438	-1 476	-1 538	-1 537	-1 542	-1 566	-1 596

## TREND ESTIMATES

**Credits**

Freight	70	71	72	72	71	71	71	71	72	72
Other transportation	586	594	599	599	594	587	582	578	575	573
Travel	1 430	1 427	1 424	1 418	1 417	1 419	1 425	1 434	1 447	1 460
Other services	768	764	758	751	745	741	739	737	737	736
<b>Total services credits</b>	<b>2 854</b>	<b>2 856</b>	<b>2 853</b>	<b>2 840</b>	<b>2 827</b>	<b>2 818</b>	<b>2 817</b>	<b>2 820</b>	<b>2 831</b>	<b>2 841</b>

**Debits**

Freight	-527	-545	-563	-581	-597	-616	-637	-659	-679	-698
Other transportation	-482	-479	-475	-473	-475	-481	-488	-495	-501	-507
Travel	-1 041	-1 046	-1 050	-1 055	-1 062	-1 071	-1 083	-1 095	-1 105	-1 114
Other services	-849	-847	-844	-839	-831	-821	-810	-800	-792	-787
<b>Total services debits</b>	<b>-2 899</b>	<b>-2 917</b>	<b>-2 932</b>	<b>-2 948</b>	<b>-2 965</b>	<b>-2 989</b>	<b>-3 018</b>	<b>-3 049</b>	<b>-3 077</b>	<b>-3 106</b>

**Memorandum items:**

Tourism related service credits(b)	1 766	1 766	1 765	1 757	1 749	1 743	1 743	1 754	1 771	1 790
Tourism related service debits(b)	-1 484	-1 482	-1 480	-1 482	-1 491	-1 509	-1 530	-1 551	-1 569	-1 586

(a) For sign conventions, see paragraph 9 of the Explanatory Notes.

(b) For a more detailed explanation of tourism related services, see paragraphs 15 and 16 of the Explanatory Notes.

	CREDITS				DEBITS			
	Mar Qtr	Jun Qtr	Sep Qtr	Dec Qtr	Mar Qtr	Jun Qtr	Sep Qtr	Dec Qtr
	2004	2004	2004	2004	2004	2004	2004	2004
	\$m	\$m	\$m	\$m	\$m	\$m	\$m	\$m
<b>Services</b>	<b>9 679</b>	<b>7 733</b>	<b>8 531</b>	<b>8 223</b>	<b>-8 217</b>	<b>-8 639</b>	<b>-9 320</b>	<b>-9 252</b>
Transportation services								
Passenger(c)	1 767	1 690	1 778	1 768	-1 112	-1 297	-1 293	-1 254
Freight	189	221	210	221	-1 431	-1 622	-1 834	-2 045
Other(c)	np	np	np	np	-193	-206	-219	-209
<i>Total transportation services</i>	<i>1 956</i>	<i>1 911</i>	<i>1 988</i>	<i>1 989</i>	<i>-2 736</i>	<i>-3 125</i>	<i>-3 346</i>	<i>-3 508</i>
Travel services								
Business	347	302	285	292	-752	-700	-763	-697
Personal								
Education-related	2 523	885	1 614	678	-168	-142	-234	-151
Other	2 613	2 293	2 449	2 980	-2 047	-2 190	-2 469	-2 384
Total personal	5 136	3 178	4 063	3 658	-2 215	-2 332	-2 703	-2 535
<i>Total travel services</i>	<i>5 483</i>	<i>3 480</i>	<i>4 348</i>	<i>3 950</i>	<i>-2 967</i>	<i>-3 032</i>	<i>-3 466</i>	<i>-3 232</i>
Communication services(d)	190	183	208	221	-189	-206	-186	-194
Construction services	18	27	21	22	—	—	—	—
Insurance services	171	173	171	171	-218	-220	-218	-218
Financial services	249	248	251	251	-147	-146	-146	-146
Computer and information services	269	297	289	292	-209	-256	-266	-276
Royalties and license fees	142	166	134	155	-472	-455	-487	-480
Other business services								
Merchanting and other trade-related	161	201	150	98	-45	-55	-57	-49
Operational leasing	3	6	5	6	-228	-192	-182	-182
Miscellaneous business, professional and technical								
Legal, accounting, management consulting and public relations	91	128	117	118	-72	-76	-84	-76
Advertising, market research and public opinion polling	15	22	23	20	-29	-53	-26	-32
Research and development	81	88	77	92	-48	-42	-37	-67
Architectural, engineering and other technical services	129	127	95	116	-70	-97	-97	-99
Agriculture, mining and on-site processing	25	31	30	26	-25	-21	-24	-28
Services between affiliated enterprises n.i.e.	244	245	223	277	-207	-205	-178	-230
Other	84	71	97	90	-84	-71	-74	-68
Total miscellaneous business, professional and technical	669	712	662	739	-535	-565	-520	-600
<i>Total other business services</i>	<i>833</i>	<i>919</i>	<i>817</i>	<i>843</i>	<i>-808</i>	<i>-812</i>	<i>-759</i>	<i>-831</i>
Personal, cultural and recreational services								
Audiovisual and related services	60	26	27	39	-206	-152	-247	-157
Other personal, cultural and recreational services	82	72	69	86	-71	-25	-25	-20
<i>Total other personal, cultural and recreational services</i>	<i>142</i>	<i>98</i>	<i>96</i>	<i>125</i>	<i>-277</i>	<i>-177</i>	<i>-272</i>	<i>-177</i>
Government services n.i.e.	226	231	208	204	-194	-210	-174	-190
<b>Memorandum items:</b>								
Tourism related services(e)	6 558	4 376	5 361	4 964	-4 161	-4 408	-4 849	-4 576

— nil or rounded to zero (including null cells)

np not available for publication but included in totals where applicable, unless otherwise indicated

(a) For sign conventions, see paragraph 9 of Explanatory Notes.

(b) For more information see paragraphs 13 and 14 of the Explanatory Notes.

(c) Passenger transportation credits include other transportation services.

(d) Communications services includes other services n.i.e..

(e) For a more detailed explanation of tourism related services, see paragraphs 15 and 16 of the Explanatory Notes.



## INTERNATIONAL MERCHANDISE EXPORTS, By commodity

	Nov 2004	Dec 2004	Jan 2005	Per cent of total merchandise exports(a)	7 MONTHS ENDED JANUARY	
					2004	2005
					\$m	\$m
MAJOR COMMODITIES						
011 Meat of bovine animals	415	408	210	2.4	2 081	2 752
041 Wheat	301	238	311	3.5	1 473	2 251
268 Wool and other animal hair	213	228	117	1.3	1 336	1 411
281 Iron ore and concentrates	537	561	532	6.1	2 989	3 899
285 Aluminium ore and concentrates	333	419	290	3.3	2 072	2 481
321 Coal, not agglomerated	1 209	1 288	1 313	14.9	5 936	8 868
333 Crude petroleum oils	454	356	387	4.4	2 844	3 199
334 Refined petroleum oils	228	170	166	1.9	1 218	1 317
343 Natural gas	269	319	295	3.4	1 335	1 878
684 Aluminium	323	337	326	3.7	2 082	2 367
781 Passenger motor vehicles	210	293	75	0.9	1 634	1 494
971 Gold, non-monetary	506	539	535	6.1	3 471	3 396
SECTION AND DIVISION OF THE SITC						
0 Food and live animals(b)						
00 Live animals other than fish, crustaceans, molluscs and aquatic invertebrates	68	73	70	0.8	528	489
01 Meat and meat preparations	593	591	340	3.9	3 074	3 851
02 Dairy products and birds' eggs	235	228	170	1.9	1 189	1 398
03 Fish (not marine mammals), crustaceans, molluscs and aquatic invertebrates, and preparations thereof(b)	81	122	91	1.0	826	723
04 Cereals and cereal preparations(b)	439	385	483	5.5	2 272	3 355
05 Vegetables and fruit	79	87	89	1.0	704	748
06 Sugars, sugar preparations and honey(b)	13	13	9	0.1	102	119
07 Coffee, tea, cocoa, spices, and manufactures thereof	25	25	14	0.2	175	169
08 Feeding stuff for animals (excl. unmilled cereals)(b)	69	73	47	0.5	513	500
09 Miscellaneous edible products and preparations	41	38	25	0.3	274	277
<i>Total food and live animals</i>	<i>1 643</i>	<i>1 635</i>	<i>1 336</i>	<i>15.2</i>	<i>9 656</i>	<i>11 630</i>
1 Beverages and tobacco						
11 Beverages	221	238	182	2.1	1 458	1 673
12 Tobacco and tobacco manufactures	12	6	6	0.1	48	72
<i>Total beverages and tobacco</i>	<i>233</i>	<i>244</i>	<i>188</i>	<i>2.1</i>	<i>1 506</i>	<i>1 746</i>
2 Crude materials, inedible, except fuels(b)						
21 Hides, skins and furskins, raw(b)	57	60	39	0.4	360	401
22 Oil seeds and oleaginous fruits	13	54	27	0.3	259	266
23 Crude rubber (incl. synthetic and reclaimed)	1	—	1	—	8	8
24 Cork and wood	86	98	56	0.6	555	589
25 Pulp and waste paper	11	11	9	0.1	32	54
26 Textile fibres and their wastes (not manufactured into yarn or fabric)(b)	259	259	141	1.6	1 890	1 897
27 Crude fertilisers (excl. those of Division 56) and crude minerals (excl. coal, petroleum and precious stones)	36	37	36	0.4	262	251
28 Metalliferous ores and metal scrap(b)	1 417	1 540	1 365	15.5	8 058	10 130
29 Crude animal and vegetable materials, n.e.s.	27	23	18	0.2	136	174
<i>Total crude materials, inedible, except fuels</i>	<i>1 907</i>	<i>2 082</i>	<i>1 692</i>	<i>19.2</i>	<i>11 560</i>	<i>13 769</i>
3 Mineral fuels, lubricants and related materials						
32 Coal, coke and briquettes	1 215	1 303	1 327	15.1	5 966	8 918
33 Petroleum, petroleum products and related materials	683	529	553	6.3	4 069	4 523
34 Gas, natural and manufactured	334	365	390	4.4	1 748	2 366
<i>Total mineral fuels, lubricants and related materials</i>	<i>2 231</i>	<i>2 197</i>	<i>2 270</i>	<i>25.8</i>	<i>11 783</i>	<i>15 807</i>

— nil or rounded to zero (including null cells)

(b) Excludes exports commodities subject to a confidentiality restriction. These are included in Division 98.

(a) Per cent of total merchandise exports is calculated for the most recent month.

	Nov 2004	Dec 2004	Jan 2005	Per cent of total merchandise exports (a)	7 MONTHS ENDED JANUARY	
					2004	2005
					\$m	\$m
SECTION AND DIVISION OF THE SITC						
4	Animal and vegetable oils, fats and waxes(b)					
41	18	13	13	0.1	135	126
42	7	5	5	0.1	28	34
43	Fats and oils (processed), waxes and inedible mixtures or preparations, of animal or vegetable origin, n.e.s.					
	6	6	5	0.1	31	38
	31	24	23	0.3	193	198
5	Chemicals and related products, n.e.s.(b)					
51	9	13	7	0.1	66	80
52	47	40	48	0.5	305	298
53	48	53	40	0.5	342	357
54	218	239	154	1.7	1 367	1 531
55	Essential oils and resinoids and perfume materials; toilet, polishing and cleansing preparations					
	38	36	24	0.3	245	240
56	5	26	4	—	114	109
57	20	25	17	0.2	118	141
58	23	28	16	0.2	142	167
59	54	59	39	0.4	341	357
	463	520	350	4.0	3 040	3 280
6	Manufactured goods classified chiefly by material(b)					
61	34	41	24	0.3	283	270
62	12	14	10	0.1	81	88
63	17	21	16	0.2	117	135
64	Paper, paperboard, and articles of paper pulp, of paper or of paperboard					
	54	57	55	0.6	405	413
65	36	39	20	0.2	266	255
66	98	52	59	0.7	501	510
67	86	65	48	0.5	531	422
68	635	629	669	7.6	3 669	4 541
69	67	76	55	0.6	436	480
	1 038	995	955	10.9	6 288	7 114
7	Machinery and transport equipment(b)					
71	91	98	45	0.5	485	573
72	81	117	69	0.8	659	691
73	13	15	10	0.1	88	88
74	General industrial machinery and equipment, n.e.s. and machine parts, n.e.s.(b)					
	118	154	67	0.8	682	816
75	107	106	72	0.8	739	656
76	Telecommunications and sound recording and reproducing apparatus and equipment					
	99	81	60	0.7	427	546
77	Electrical machinery, apparatus, appliances, parts (incl. non-electrical counterparts of electrical domestic equipment)					
	127	168	79	0.9	859	925
78	300	397	138	1.6	2 387	2 167
79	63	85	63	0.7	652	523
	1 000	1 222	602	6.8	6 978	6 984

— nil or rounded to zero (including null cells)

(a) Per cent of total merchandise exports is calculated for the most recent month.

(b) Excludes exports commodities subject to a confidentiality restriction. These are included in Division 98.

	Nov	Dec	Jan	Per cent	7 MONTHS	
	2004	2004	2005	of total	ENDED JANUARY	
	\$m	\$m	\$m	merchandise	2004	2005
				exports(a)		
				%	\$m	\$m
SECTION AND DIVISION OF THE SITC						
8	Miscellaneous manufactured articles(b)					
81	Prefabricated buildings; sanitary, plumbing, heating and lighting fixtures and fittings, n.e.s.	12	9	5	0.1	54 59
82	Furniture, parts thereof; bedding, mattresses, mattress supports, cushions and similar stuffed furnishings	10	12	7	0.1	84 75
83	Travel goods, handbags and similar containers	2	2	1	—	13 13
84	Articles of apparel and clothing accessories	21	17	14	0.2	178 162
85	Footwear(b)	4	3	2	—	28 26
87	Professional, scientific and controlling instruments and apparatus, n.e.s.	103	152	72	0.8	690 769
88	Photographic apparatus, equipment and supplies and optical goods, n.e.s.; watches and clocks	47	32	19	0.2	320 306
89	Miscellaneous manufactured articles, n.e.s.	182	192	103	1.2	1 083 1 109
	<i>Total miscellaneous manufactured articles</i>	381	419	222	2.5	2 450 2 518
9	Commodities and transactions not classified elsewhere in the SITC(c)(d)					
93	Special transactions and commodities not classified according to kind	112	204	133	1.5	1 411 1 030
95	Gold coin whether or not legal tender, and other coin being legal tender	11	17	16	0.2	59 79
96	Coin (excl. gold coin), not being legal tender	—	—	—	—	—
97	Gold, non-monetary (excl. gold ores and concentrates)	506	539	535	6.1	3 471 3 396
98	Combined confidential items excl. some of SITC 280 (exports only) and some of SITCs 510 and 520 (imports only)(c)(d)	461	446	475	5.4	3 121 3 371
	<i>Total commodities and transactions not classified elsewhere in the SITC</i>	1 091	1 206	1 159	13.2	8 062 7 877
	<b>Total Merchandise Exports</b>	<b>10 018</b>	<b>10 542</b>	<b>8 796</b>	<b>100.0</b>	<b>61 516 70 922</b>
	Balance of Payments Adjustments	117	150	63	. .	291 581
	Goods Credits (exports) on a Balance of Payments Basis	10 135	10 692	8 859	. .	61 807 71 503

. . not applicable

— nil or rounded to zero (including null cells)

(a) Per cent of total merchandise exports is calculated for the most recent month.

(b) Excludes exports commodities subject to a confidentiality restriction. These are included in Division 98.

(c) Includes exports commodities subject to a confidentiality restriction.

(d) Includes small value export entries which can not yet be allocated by commodity.

	Nov	Dec	Jan	Per cent	7 MONTHS	
	2004	2004	2005	of total	ENDED JANUARY	
	\$m	\$m	\$m	merchandise	2004	2005
				imports(a)		
				%	\$m	\$m
MAJOR COMMODITIES						
333 Crude petroleum oils	892	864	569	5.1	3 237	5 385
334 Refined petroleum oils	399	455	403	3.6	1 720	2 632
542 Medicaments	466	396	405	3.6	2 694	3 203
641 Paper and paperboard	188	164	170	1.5	1 203	1 241
752 Automatic data processing machines	470	477	372	3.3	2 738	3 177
759 Parts and accessories of office machines	182	179	150	1.3	1 252	1 255
764 Telecommunications equipment	452	432	341	3.0	2 296	3 000
781 Passenger motor vehicles	904	938	1 020	9.1	6 428	6 521
782 Motor vehicles for the transport of goods	335	308	326	2.9	1 690	2 273
784 Parts and accessories of motor vehicles	208	167	181	1.6	1 237	1 333
792 Aircraft and associated equipment	251	226	65	0.6	2 729	2 168
971 Gold, non-monetary	166	206	182	1.6	1 559	1 350

## SECTION AND DIVISION OF THE SITC

0	Food and live animals					
00	Live animals other than fish, crustaceans, molluscs and aquatic invertebrates	5	6	7	0.1	42 37
01	Meat and meat preparations	23	30	29	0.3	142 185
02	Dairy products and birds' eggs	31	35	31	0.3	168 213
03	Fish (not marine mammals), crustaceans, molluscs and aquatic invertebrates, and preparations thereof	95	86	76	0.7	556 581
04	Cereals and cereal preparations	36	35	31	0.3	223 253
05	Vegetables and fruit	106	109	92	0.8	584 670
06	Sugars, sugar preparations and honey	18	15	12	0.1	109 108
07	Coffee, tea, cocoa, spices, and manufactures thereof	61	59	58	0.5	386 428
08	Feeding stuff for animals (excl. unmilled cereals)	27	26	20	0.2	165 166
09	Miscellaneous edible products and preparations	99	98	114	1.0	626 683
	<i>Total food and live animals</i>	501	497	469	4.2	3 001 3 323
1	Beverages and tobacco					
11	Beverages	89	86	62	0.6	459 526
12	Tobacco and tobacco manufactures	14	21	16	0.1	112 105
	<i>Total beverages and tobacco</i>	103	107	77	0.7	572 632
2	Crude materials, inedible, except fuels					
21	Hides, skins and furskins, raw	—	—	—	—	2 1
22	Oil seeds and oleaginous fruits	7	5	9	0.1	53 31
23	Crude rubber (incl. synthetic and reclaimed)	13	10	13	0.1	71 83
24	Cork and wood	62	46	50	0.4	356 369
25	Pulp and waste paper	28	11	16	0.1	132 131
26	Textile fibres and their wastes (not manufactured into yarn or fabric)	14	12	11	0.1	88 93
27	Crude fertilisers (excl. those of Division 56) and crude minerals (excl. coal, petroleum and precious stones)	17	10	12	0.1	127 100
28	Metalliferous ores and metal scrap	16	24	26	0.2	180 164
29	Crude animal and vegetable materials, n.e.s.	25	27	26	0.2	153 162
	<i>Total crude materials, inedible, except fuels</i>	182	146	164	1.5	1 162 1 136
3	Mineral fuels, lubricants and related materials(b)					
32	Coal, coke and briquettes	1	1	3	—	9 13
33	Petroleum, petroleum products and related materials(b)	1 327	1 343	997	8.9	5 114 8 234
34	Gas, natural and manufactured	1	9	—	—	111 73
	<i>Total mineral fuels, lubricants and related materials</i>	1 328	1 353	1 000	8.9	5 234 8 320

— nil or rounded to zero (including null cells)

(a) Per cent of total merchandise imports is calculated for the most recent month.

(b) Excludes imports commodities subject to a confidentiality restriction. These are included in Division 98.

				Per cent of total merchandise imports(a)	7 MONTHS ENDED JANUARY	
	Nov	Dec	Jan		.....	
	2004	2004	2005		2004	2005
	\$m	\$m	\$m	%	\$m	\$m
SECTION AND DIVISION OF THE SITC						
4	Animal and vegetable oils, fats and waxes					
41	Animal oils and fats	1	2	1	—	17 10
42	Fixed vegetable fats and oils, crude, refined or fractionated	26	21	23	0.2	170 188
43	Fats and oils (processed), waxes and inedible mixtures or preparations, of animal or vegetable origin, n.e.s.	3	3	4	—	25 26
	<i>Total animal and vegetable oils, fats and waxes</i>	29	26	28	0.2	212 224
5	Chemicals and related products, n.e.s.(b)					
51	Organic chemicals	201	248	209	1.9	1 309 1 515
52	Inorganic chemicals(b)	60	64	83	0.7	408 479
53	Dyeing, tanning and colouring materials	45	46	45	0.4	301 324
54	Medicinal and pharmaceutical products	581	522	471	4.2	3 308 3 923
55	Essential oils and resinoids and perfume materials; toilet, polishing and cleansing preparations	104	116	109	1.0	731 817
56	Fertilisers (excl. crude)	48	97	104	0.9	296 482
57	Plastics in primary forms	126	110	114	1.0	661 763
58	Plastics in non-primary forms	102	98	99	0.9	605 679
59	Chemical materials and products, n.e.s.	121	131	121	1.1	815 886
	<i>Total chemicals and related products, n.e.s.</i>	1 387	1 433	1 355	12.1	8 435 9 869
6	Manufactured goods classified chiefly by material(b)					
61	Leather, leather manufactures, and dressed furskins, n.e.s.	15	16	10	0.1	97 95
62	Rubber manufactures, n.e.s.(b)	167	164	157	1.4	1 011 1 091
63	Cork and wood manufactures (excl. furniture)	58	47	58	0.5	365 385
64	Paper, paperboard, and articles of paper pulp, of paper or of paperboard(b)	232	203	205	1.8	1 472 1 535
65	Textile yarn, fabrics, made-up articles n.e.s. and related products	222	176	192	1.7	1 471 1 500
66	Non-metallic mineral manufactures, n.e.s.	187	175	160	1.4	1 204 1 276
67	Iron and steel(b)	256	280	267	2.4	1 157 1 721
68	Non-ferrous metals(b)	83	78	84	0.7	595 575
69	Manufactures of metals, n.e.s.(b)	355	316	277	2.5	1 875 2 214
	<i>Total manufactured goods classified chiefly by material</i>	1 576	1 455	1 411	12.6	9 246 10 392
7	Machinery and transport equipment(b)					
71	Power generating machinery and equipment	315	247	240	2.1	1 782 1 964
72	Machinery specialised for particular industries	459	572	478	4.3	2 909 3 434
73	Metal working machinery	67	70	44	0.4	371 397
74	General industrial machinery and equipment, n.e.s. and machine parts, n.e.s.	806	752	637	5.7	4 248 5 039
75	Office machines and automatic data processing machines	705	707	563	5.0	4 265 4 794
76	Telecommunications and sound recording and reproducing apparatus and equipment	895	713	513	4.6	4 201 5 334
77	Electrical machinery, apparatus, appliances, parts (incl. non-electrical counterparts of electrical domestic equipment)(b)	764	653	628	5.6	4 015 4 632
78	Road vehicles (incl. air-cushion vehicles)	1 597	1 569	1 660	14.9	10 167 11 129
79	Transport equipment (excl. road vehicles)	325	305	147	1.3	3 199 2 606
	<i>Total machinery and transport equipment</i>	5 934	5 587	4 912	43.9	35 158 39 328

— nil or rounded to zero (including null cells)

(a) Per cent of total merchandise imports is calculated for the most recent month.

(b) Excludes imports commodities subject to a confidentiality restriction. These are included in Division 98.

				Per cent of total merchandise imports(a)	7 MONTHS ENDED JANUARY	
	Nov	Dec	Jan		.....	
	2004	2004	2005		2004	2005
	\$m	\$m	\$m	%	\$m	\$m
SECTION AND DIVISION OF THE SITC						
8	Miscellaneous manufactured articles(b)					
81	Prefabricated buildings; sanitary, plumbing, heating and lighting fixtures and fittings, n.e.s.					
	49	44	38	0.3	280	319
82	Furniture, parts thereof; bedding, mattresses, mattress supports, cushions and similar stuffed furnishings					
	198	172	139	1.2	992	1 226
83	Travel goods, handbags and similar containers					
	60	44	41	0.4	309	364
84	Articles of apparel and clothing accessories					
	316	228	389	3.5	1 992	2 317
85	Footwear					
	85	69	113	1.0	555	652
87	Professional, scientific and controlling instruments and apparatus, n.e.s.					
	300	298	254	2.3	1 776	2 080
88	Photographic apparatus, equipment and supplies and optical goods, n.e.s.; watches and clocks(b)					
	128	109	96	0.9	808	837
89	Miscellaneous manufactured articles, n.e.s.					
	771	596	493	4.4	4 495	4 762
	<i>Total miscellaneous manufactured articles</i>					
	1 906	1 560	1 563	14.0	11 206	12 556
9	Commodities and transactions not classified elsewhere in the SITC(c)					
93	Special transactions and commodities not classified according to kind					
	3	3	3	—	17	19
95	Gold coin whether or not legal tender, and other coin being legal tender					
	1	1	1	—	4	4
96	Coin (excl. gold coin), not being legal tender					
	17	—	—	—	1	17
97	Gold, non-monetary (excl. gold ores and concentrates)					
	166	206	182	1.6	1 559	1 350
98	Combined confidential items excl. some of SITC 280 (exports only) and some of SITCs 510 and 520 (imports only)(c)					
	19	16	14	0.1	154	120
	<i>Total commodities and transactions not classified elsewhere in the SITC</i>					
	206	225	199	1.8	1 734	1 511
<b>Total Merchandise Imports</b>						
	<b>13 152</b>	<b>12 388</b>	<b>11 178</b>	<b>100.0</b>	<b>75 959</b>	<b>87 292</b>
Balance of Payments Adjustment						
	149	154	121	. .	1 069	691
Goods Debits (imports) on a Balance of Payments Basis						
	13 301	12 542	11 299	. .	77 028	87 983

. . not applicable

— nil or rounded to zero (including null cells)

(a) Per cent of total merchandise imports is calculated for the most recent month.

(b) Excludes imports commodities subject to a confidentiality restriction. These are included in Division 98.

(c) Includes imports commodities subject to a confidentiality restriction.

	EXPORTS				IMPORTS				BALANCE OF MERCHANDISE TRADE	
	2003-04	January 2005	7 months ended January 2004	7 months ended January 2005	2003-04	January 2005	7 months ended January 2004	7 months ended January 2005	2003-04	7 months ended January 2005
	\$m	\$m	\$m	\$m	\$m	\$m	\$m	\$m	\$m	\$m
Belgium(b)	676	81	401	484	1 237	87	680	640	-561	-156
Brazil	512	40	300	326	494	49	303	357	18	-31
Canada	1 828	114	910	1 067	1 818	160	1 063	1 093	10	-27
China	9 935	787	5 398	6 598	15 338	1 575	9 080	12 018	-5 403	-5 420
Denmark	167	11	96	97	856	56	488	591	-690	-495
Egypt(c)	649	24	206	184	36	1	10	9	614	175
Fiji	430	25	266	237	210	14	123	134	220	103
Finland	575	79	313	352	651	66	364	467	-76	-115
France	939	63	547	568	3 816	267	2 374	2 541	-2 877	-1 973
Germany	1 309	99	723	765	7 985	755	4 832	5 120	-6 676	-4 354
Hong Kong (SAR of China)	2 754	195	1 577	1 563	1 202	89	714	758	1 552	806
India	4 865	487	2 567	3 125	1 000	93	591	727	3 865	2 398
Indonesia	2 984	268	1 655	1 989	3 765	275	2 120	1 985	-781	4
Iran	125	5	89	96	43	2	29	12	82	84
Iraq	315	53	163	295	—	—	—	6	315	289
Ireland	172	12	95	123	1 686	129	959	1 079	-1 514	-956
Israel	160	10	120	96	470	51	267	326	-310	-230
Italy	1 375	101	790	838	4 215	421	2 408	2 737	-2 840	-1 899
Japan	19 821	1 891	10 986	13 832	16 101	1 248	9 330	10 086	3 721	3 746
Korea, Republic of	8 490	762	4 882	5 504	4 877	385	2 840	2 966	3 613	2 538
Kuwait	580	24	342	279	110	16	74	76	470	203
Malaysia	2 224	242	1 223	1 533	4 707	366	2 560	3 388	-2 483	-1 856
Mexico	341	71	242	375	603	50	332	425	-262	-50
Netherlands	1 368	114	807	954	1 197	113	686	762	171	192
New Zealand	8 094	492	4 763	5 383	5 056	347	2 930	3 105	3 038	2 278
Pakistan	438	23	289	309	161	13	93	87	277	221
Papua New Guinea	809	85	457	606	1 422	114	766	968	-613	-362
Philippines	938	56	514	537	762	41	474	426	175	111
Saudi Arabia	1 992	87	1 079	1 049	757	95	349	656	1 235	393
Singapore	3 061	181	1 608	1 826	5 112	532	2 798	3 988	-2 051	-2 162
South Africa	1 427	123	800	944	1 246	88	703	711	182	234
Spain	659	51	390	412	1 103	131	630	844	-444	-432
Sweden	228	7	125	144	1 739	150	982	1 072	-1 511	-928
Switzerland	181	9	105	132	1 190	92	675	853	-1 009	-721
Taiwan	3 705	344	2 078	2 540	3 396	311	1 978	2 231	308	309
Thailand	2 463	409	1 297	2 126	3 669	318	2 155	2 315	-1 206	-189
Turkey	277	59	158	195	262	32	138	221	16	-26
United Arab Emirates	1 185	81	678	780	742	59	467	697	443	84
United Kingdom	5 147	209	3 464	3 140	5 429	423	3 096	3 443	-282	-303
United States of America	9 481	512	5 449	5 454	19 929	1 544	11 601	12 339	-10 448	-6 885
Viet Nam	512	46	236	406	2 019	206	1 222	1 751	-1 506	-1 346
Other Countries(d)	5 858	464	3 327	3 657	4 587	417	2 674	3 280	1 271	377
<b>Total</b>	<b>109 049</b>	<b>8 796</b>	<b>61 516</b>	<b>70 922</b>	<b>130 997</b>	<b>11 178</b>	<b>75 959</b>	<b>87 292</b>	<b>-21 947</b>	<b>-16 370</b>
APEC	77 838	6 485	43 503	51 614	91 075	7 633	52 714	60 744	-13 237	-9 131
ASEAN	12 273	1 215	6 581	8 496	20 551	1 762	11 618	14 324	-8 278	-5 828
Developing Countries	52 823	4 558	29 156	34 330	52 071	4 806	30 095	37 383	752	-3 052
Least Developed Countries	1 183	94	652	836	213	20	126	137	970	699
European Union(e)	12 951	841	7 941	8 062	31 500	2 784	18 447	20 500	-18 549	-12 439
OECD	61 426	4 752	35 416	39 990	81 841	6 672	47 646	51 910	-20 415	-11 920

— nil or rounded to zero (including null cells)

(a) See AusStats for details of all countries.

(b) Prior to July 2003, Belgium and Luxembourg were combined. Belgium-Luxembourg is included in 'Other Countries' up to and including June 2003.

(c) Exports of Alumina to Egypt are excluded from its country total and included in the 'Other countries' category.

(d) Includes small value export entries which can not yet be allocated by country.

(e) From July 2004, European Union includes 25 member countries.

	7 MONTHS ENDED JANUARY			
	2003-04	Jan 2005	2004	2005
	\$m	\$m	\$m	\$m
EXPORTS (a)				
New South Wales	19 091	1 697	10 342	12 940
Victoria	18 012	1 051	9 893	10 746
Queensland	20 128	1 726	11 280	14 380
South Australia	7 608	566	4 284	4 479
Western Australia	32 302	2 978	18 678	21 428
Tasmania	2 317	192	1 306	1 447
Northern Territory	1 883	136	1 121	1 262
Australian Capital Territory	1	—	1	—
State not available for publication(b)(c)	344	41	203	231
Re-exports	7 362	409	4 407	4 010
<b>Total exports</b>	<b>109 049</b>	<b>8 796</b>	<b>61 516</b>	<b>70 922</b>
IMPORTS				
New South Wales	53 763	4 416	31 246	35 242
Victoria	40 727	3 409	23 809	26 564
Queensland	18 079	1 542	10 305	12 591
South Australia	5 163	443	2 967	3 355
Western Australia	11 690	1 200	6 813	8 023
Tasmania	669	87	391	382
Northern Territory	899	81	425	1 134
Australian Capital Territory	7	—	3	2
<b>Total imports</b>	<b>130 997</b>	<b>11 178</b>	<b>75 959</b>	<b>87 292</b>

— nil or rounded to zero (including null cells)

(a) State in which the final stage of production or manufacture occurs.

(b) Includes exports which can not yet be allocated by state. These shipments will be appropriately classified as more details become available.

(c) Exports of Alumina to Bahrain, Egypt and Iceland are excluded from the state totals and included in 'State not available for publication' category.



## PERIOD AVERAGE EXCHANGE RATES(a): Per Australian Dollar

<i>Period</i>	<i>United States dollar</i>	<i>United Kingdom pound</i>	<i>euro</i>	<i>Japanese yen</i>	<i>Trade-weighted index of value of the \$A(b)</i>
FINANCIAL YEAR					
<b>2001-02</b>	0.5239	0.3632	0.5850	66.10	50.7
<b>2002-03</b>	0.5848	0.3685	0.5577	70.01	53.5
<b>2003-04</b>	0.7137	0.4102	0.5981	78.91	61.5
MONTHS					
<b>2003</b>					
November	0.7159	0.4238	0.6118	78.19	61.9
December	0.7383	0.4223	0.6018	79.62	63.0
<b>2004</b>					
January	0.7695	0.4227	0.6101	81.89	64.8
February	0.7777	0.4165	0.6152	82.84	65.2
March	0.7498	0.4100	0.6110	81.45	63.6
April	0.7442	0.4121	0.6201	79.98	63.3
May	0.7054	0.3948	0.5874	79.01	60.9
June	0.6942	0.3794	0.5714	75.90	59.5
July	0.7164	0.3887	0.5835	78.29	61.1
August	0.7104	0.3903	0.5828	78.37	60.8
September	0.7013	0.3912	0.5743	77.20	59.9
October	0.7331	0.4057	0.5868	79.81	62.0
November	0.7689	0.4139	0.5925	80.61	63.7
December	0.7678	0.3981	0.5735	79.70	62.7
<b>2005</b>					
January	0.7647	0.4071	0.5830	78.98	62.7

- (a) These exchange rates and the trade-weighted index are derived using rates provided by the Reserve Bank of Australia in respect of each trading day.
- (b) May 1970=100. The trade-weighted index is reweighted annually (on 1 October) and on special occasions if required.

## EXPLANATORY NOTES

### INTRODUCTION

**1** This publication presents preliminary estimates of Australia's international trade in goods and services on a balance of payments basis and merchandise import and export statistics on a recorded trade basis.

**2** Merchandise trade statistics on a recorded trade basis are compiled from information submitted by exporters and importers or their agents to the Australian Customs Service (ACS). Adjustments for coverage, timing and valuation are made to recorded trade data to convert them to a balance of payments basis. The main source for services data is the quarterly Survey of International Trade in Services.

**3** More comprehensive quarterly estimates of Australia's trade in goods and services, together with comprehensive details of Australia's balance of payments are included in the quarterly publication, *Balance of Payments and International Investment Position, Australia* (cat. no. 5302.0). Detailed monthly statistics on merchandise trade are available on AusStats or by subscription to tailored services.

### CONCEPTS, SOURCES AND METHODS

**4** The conceptual framework used in compiling Australia's merchandise trade statistics can be found in *International Merchandise Trade, Australia: Concepts, Sources and Methods, 2001* (cat. no. 5489.0).

**5** The conceptual framework used in compiling Australia's balance of payments statistics is based on the Fifth Edition of the International Monetary Fund's *Balance of Payments Manual* (BPM5,1993). Descriptions of the underlying concepts and structure of the balance of payments and the sources, methods and terms used in compiling the estimates are presented in *Balance of Payments and International Investment Position, Australia: Concepts, Sources and Methods, 1998* (cat. no. 5331.0). To bring merchandise trade statistics on a recorded trade basis to a balance of payment basis, timing adjustments are made to ensure that the transaction is recorded in the period in which ownership changed, rather than in the period in which the transaction was recorded by ACS. Adjustments are also made to imports to take account of distortions which arise when significant changes occur in the volume of import entries lodged but not yet processed by ACS in a given month. Chapter 6 of cat. no. 5331.0 provides more detail on the relationship between statistics on international merchandise trade on a recorded trade basis and on a balance of payments basis.

**6** Both of the Concepts, Sources and Methods publications are available for free from the ABS web site, see <<http://www.abs.gov.au>> – select *About Statistics* then *Concepts & Classifications*.

### SEASONAL ADJUSTMENT

**7** Monthly original estimates are volatile, being subject to calendar-related and large irregular influences. Seasonally adjusted estimates are derived by estimating and removing systematic calendar related effects, such as seasonal and trading day influences, from the original series. Trading day effects are removed from the original estimates prior to the seasonal adjustment process. Seasonal adjustment does not aim to remove the irregular or non-seasonal influences which may be present in any particular month. These irregular influences may reflect both random economic events and difficulties of statistical recording. The estimates of international trade in goods and services on a balance of payments basis are seasonally adjusted. The merchandise exports and imports statistics on a recorded trade basis are not.

### TREND ESTIMATES

**8** The month-to-month movements of the seasonally adjusted estimates may not be reliable indicators of trend behaviour because they include irregular or non-seasonal movements. Trend estimates are derived by applying a 13-term Henderson moving average to the seasonally adjusted series. The use of a 13-term Henderson average can result in revisions to the estimates for the most recent six months as additional observations become available. Revisions can also occur because of changes in the original data and as a result of the annual re-estimation of the seasonal factors.

## EXPLANATORY NOTES *continued*

### SIGN CONVENTION

**9** In keeping with balance of payments conventions, where statistics are on a balance of payments basis, credit entries (exports) are shown without sign and debit items (imports) are shown as negative entries. For statistics on a recorded trade basis, both imports and exports are shown without sign. The calculation of percentage changes on balance of payments debit items are made without regard to sign. References to balance of payments debit items in Key Figures, Key Points, and Analysis and Comments are also made without regard to sign.

### COMMODITY BREAKDOWNS OF GOODS

**10** For details of the classification used for goods exports on a balance of payments basis (credits), see table 6.6 in *Balance of Payments and International Investment Position, Australia: Concepts, Sources and Methods, 1998* (cat. no. 5331.0).

**11** Details of the classification of goods imports on a balance of payments basis (debits) are provided in table 6.7 in cat. no. 5331.0. Most of the commodity groups shown in table 4 for goods debits are available for more detailed subgroups from AusStats.

**12** The recorded trade statistics shown in tables 8 and 9 are classified by the Standard International Trade Classification 2 (SITC). The first section of tables 8 and 9 show the most significant commodities (by value) at the SITC 3 digit level.

### COMMODITY BREAKDOWNS OF SERVICES

**13** The quarterly detailed services data published in table 7 are consistent with the monthly aggregates shown in table 5. Services trade data by major partner countries and by Australian state of production/consumption are published on a financial year basis and a calendar year basis.

**14** Monthly indicators for many of the services components that are only surveyed quarterly are not available. In particular, the Freight and Other transportation components of Total services credits are not available for publication on a monthly basis. The estimates for these items shown in table 5 are therefore derived by dividing the quarterly estimate by three. Where quarterly survey data are not available, freight debits are derived directly from imports data for the reference month as a difference between total merchandise cost, insurance and freight (CIFE) and free on board (FOB), adjusted to reflect timing and processing adjustments. For freight credits and other transportation credits and debits, estimates are derived by extrapolating the last month's data by an average of movements for the same month over the three previous years.

### TOURISM RELATED SERVICES

**15** The tourism related services memorandum items provide timely indicators of the movements in tourism related activities, not an absolute measure of the level of these activities. These series are not compiled on a Balance of Payments conceptual basis. However, they do provide a reasonable approximation of world tourism related activities.

**16** The memorandum items have been derived by re-aggregating relevant components of the international trade in services series of the balance of payments accounts. The tourism related indicator has been derived by combining total travel services (business, education-related and other personal travel), passenger fares, and the air transport component of other transportation services which relates to agency fees and commission receipts.

### RELATED PRODUCTS OR SERVICES

**17** More detailed balance of payments and recorded merchandise trade data, including forward seasonal factors, are available from AusStats. Very detailed merchandise trade data by commodity, country and state are available by contacting the National Information and Referral Service, as shown on the back of this publication.

**18** Users may also wish to refer to the following publications which are available from ABS Bookshops and on the ABS web site:

- *Balance of Payments and International Investment Position, Australia* (cat. no. 5302.0) – issued quarterly

## EXPLANATORY NOTES *continued*

---

### RELATED PRODUCTS OR SERVICES *continued*

- *International Merchandise Imports, Australia* (cat. no. 5439.0) – issued monthly
- *International Trade Price Indexes, Australia* (cat. no. 6457.0) – issued quarterly
- *Balance of Payments and International Investment Position, Australia: Concepts, Sources and Methods* (cat. no. 5331.0)
- *Information Paper: Quality of Australian Balance of Payments Statistics* (cat. no. 5342.0)
- *International Merchandise Trade, Australia: Concepts, Sources and Methods* (cat. no. 5489.0)
- *A Guide to Australian Balance of Payments and International Investment Position Statistics* (cat. no. 5362.0.55.001).

**19** The last four publications are available for free on the ABS web site <<http://www.abs.gov.au>> – select *About Statistics* then *Concepts & Classifications*.

### CAUTIONARY NOTE

**20** The tables in this publication are presented on two bases. Tables 1–7 contain estimates of Australia's international trade in goods and services which have been adjusted for coverage, valuation and timing to a balance of payments basis. Tables 8–11 contain estimates of merchandise exports and imports based on Australian Customs Service records. Paragraph 5 of the Explanatory Notes provides an explanation of the difference between these bases.

## APPENDIX RELATED ARTICLES

<i>Article</i>	<i>Source</i>	<i>Issue</i>
<b>Investment</b>		
Kangaroo bonds	5302.0	Sep qtr 2004
Foreign ownership of equity	5302.0	Sep qtr 2004
Gross external debt	5302.0	Sep qtr 2003
Measuring Australia's foreign currency exposure	5302.0	Dec qtr 2001
<b>Balance of payments</b>		
International comparison of balance of payments statistics	5363.0	1999–2000
The Sydney Olympic Games Update	5368.0	Jul 2000
The Sydney Olympic Games	5302.0	Sep qtr 1999
<b>Merchandise trade</b>		
Australia's Importers, 2003–04	(a) web site	Nov 2004
Australia's Exporters, 2003–04	(a) web site	Oct 2004
Australia's Trade with the USA	(a) web site	Mar 2004
Australia's Exporters, 2002–03	(a) web site	Oct 2003
Australia's Importers, 2002–03	(a) web site	Nov 2003
Export and import currencies, 2003	(a) web site	May 2003
Australia's exporters and importers, 2001–02	5422.0	Dec qtr 2002
Trade through Australia's ports	5422.0	Sep qtr 2002
Australia's trade in wine	5422.0	Dec qtr 2001
Australia's export markets, 1991–92 to 2000–01	5422.0	Jun qtr 2001
Major commodities traded by Australia, 1991 to 2000	5422.0	Dec qtr 2000
Australia's trade in crude petroleum	5422.0	Mar qtr 2000
Australia's merchandise trade with the Republic of Korea	5422.0	Sep qtr 1999
Australia's merchandise trade with Japan	5422.0	Mar qtr 1999
Bilateral merchandise trade statistics reconciliation: Australia and the European Union, 1992 to 1997	5422.0	Sep qtr 1998
<b>Trade in services</b>		
International trade in services by partner country, 2003–04	(a) web site	Nov 2004
International trade in services by State, 2003–04	(a) web site	Nov 2004
International trade in services by partner country, 2003	(a) web site	Mar 2004
International trade in services by State, 2003	(a) web site	Mar 2004
International trade in services by partner country, 2002–03	(a) web site	Oct 2003
International trade in services by State, 2002–03	(a) web site	Oct 2003
Goods and services by region, 2001	5368.0	Feb 2002
International trade in education services	(a) web site	Oct 2002
<b>Finance</b>		
Recent trends in construction and first home buyers finance	5609.0	Mar 2002
Household sector data in the financial accounts	5232.0	Mar qtr 2002
Investment Managers	5655.0	Jun qtr 2000
Venture capital, 1999–2000	5611.0	2000–01
Impact of 2003–2004 farm season on Australian production	5611.0	1999–2000
<b>Globalisation</b>		
Foreign Ownership of Australian Exporters and Importers, 2002–03	5496.0.55.001	2002–03
Australian Outward Foreign Affiliates Trade, 2002–03	5495.0	2002–03
Economic Activity of Foreign Owned Businesses in Australia, 2000–01	5494.0	2000–01
<b>Technical information</b>		
Implementation of New Customs Systems	(a) web site	Aug 2004
Changes to country and port classifications	5368.0	May 2003
The effect of customs changes on export statistics	5422.0	Jun qtr 2002
Harmonized system changes	5422.0	Sep qtr 2001
International trade review: data quality and client queries	5422.0	Jun qtr 2000
Data confidentiality	5422.0	Dec qtr 1999

(a) International Trade Theme Page: Select Themes; Economy; International Trade; Topics of Interest.





## FOR MORE INFORMATION . . .

- INTERNET* **www.abs.gov.au** the ABS web site is the best place to start for access to summary data from our latest publications, information about the ABS, advice about upcoming releases, our catalogue, and Australia Now—a statistical profile.
- LIBRARY* A range of ABS publications is available from public and tertiary libraries Australia-wide. Contact your nearest library to determine whether it has the ABS statistics you require, or visit our web site for a list of libraries.
- CPI INFOLINE* For current and historical Consumer Price Index data, call 1902 981 074 (call cost 77c per minute).
- DIAL-A-STATISTIC* This service now provides only current Consumer Price Index statistics call 1900 986 400 (call cost 77c per minute).

## INFORMATION SERVICE

Data already published that can be provided within five minutes will be free of charge. Our information consultants can also help you to access the full range of ABS information—ABS user pays services can be tailored to your needs, time frame and budget. Publications may be purchased. Specialists are on hand to help you with analytical or methodological advice.

- PHONE* 1300 135 070
- EMAIL* [client.services@abs.gov.au](mailto:client.services@abs.gov.au)
- FAX* 1300 135 211
- POST* Client Services, ABS, GPO Box 796, Sydney NSW 2001

## WHY NOT SUBSCRIBE?

ABS subscription services provide regular, convenient and prompt deliveries of selected ABS publications and products as they are released. Email delivery of monthly and quarterly publications is available.

- PHONE* 1300 366 323
- EMAIL* [subscriptions@abs.gov.au](mailto:subscriptions@abs.gov.au)
- FAX* (03) 9615 7848
- POST* Subscription Services, ABS, GPO Box 2796Y, Melbourne Vic 3001



2536800001056

ISSN 1328 2778

RRP \$23.00